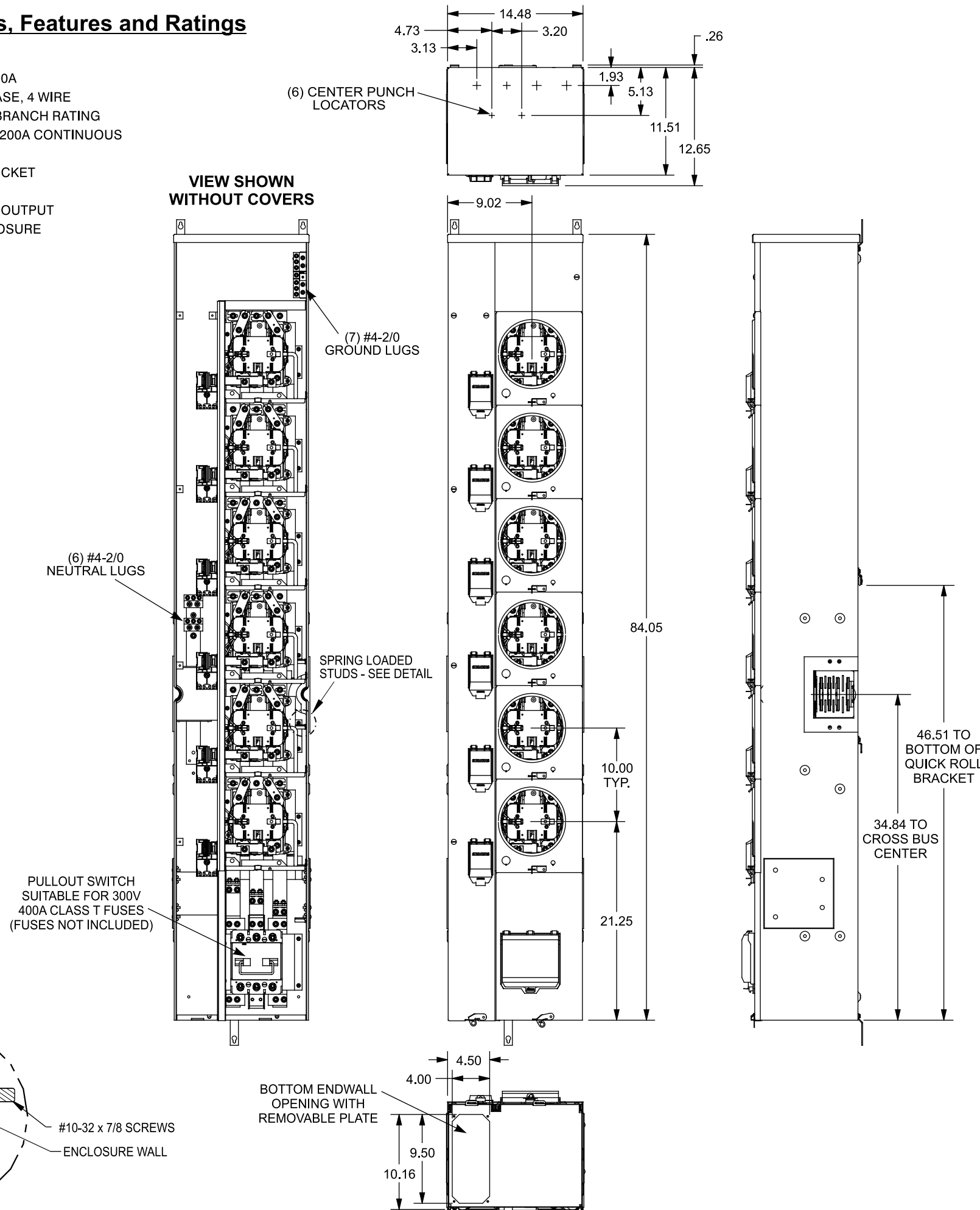


## Catalog Numbers, Features and Ratings

- MAIN BUS RATING: 1200A
- PANELBOARD RATING: 400A
- 208Y/120 VOLTS AC, 3 PHASE, 4 WIRE
- 6 POSITIONS, 125A MAX. BRANCH RATING
- METER SOCKET RATING: 200A CONTINUOUS
- 100,000 AIC MAX. RATING
- LEVER BYPASS METER SOCKET
- RINGLESS METER COVER
- 3 PHASE INPUT / 1 PHASE OUTPUT
- TYPE 3R OUTDOOR ENCLOSURE

### VIEW SHOWN WITHOUT COVERS



## Additional Modules

| FOR USE WITH:       |                                             |
|---------------------|---------------------------------------------|
| Module Description  | Siemens Series#                             |
| Main Breakers       | (W)MC, WB, WEB, WXB                         |
| Switches            | WMP, WMS, WS, WES                           |
| Tap/Terminal Boxes  | WMTB, WTB, WET, WT_PU                       |
| Pull Boxes          | WMMB                                        |
| Meter Module        | (W)MM, WxMM, (W)MT, (W)ML, (W)MK, (W)MLZ(F) |
| Meter Combinations  | WC, WCL, WCT                                |
| Extension Box/Surge | WMEX, WSP, WSPD                             |
| Bussed Elbow        | BE                                          |

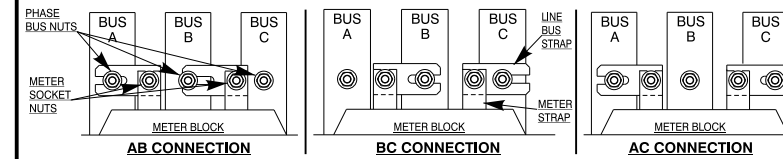
| Connect Modules Using: | Catalog Number / Torque                   |
|------------------------|-------------------------------------------|
| QuickConnect           | QC4, Torque 400-440 lb-in (35-36 ft.-lb.) |

## Accessories and Replacement Parts

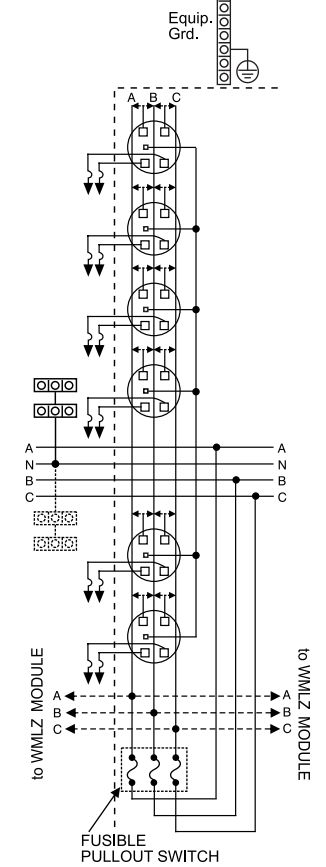
| Description                   | Catalog No. |
|-------------------------------|-------------|
| WMLZ Secondary Cross Bus Kit  | ECWMLZFBUS  |
| End Enclosure Plate (W)MLZ(F) | ECWMLZEP    |
| Bottom Encl. Plate (W)MLZ(F)  | ECWMLZBP    |
| Meter Cover, 10" Ringless     | ECWML10     |
| Meter Cover Plate             | ECCP3       |
| End Closure Plate             | WMPE        |
| 125A Breaker Mounting         | ECMFBM1     |
| Breaker Cover Repl.           | ECBC        |
| Breaker HoldDown              | ECMBR2      |
| Load Cover Screws             | ECMFCS      |
| Parts Kit                     | ECMFPK      |
| Ground/Ntl Bar Kit            | ECMFGN125   |
| Mounting Tabs (2)             | ECMFTAB     |
| QuickRoll Wheel Clip          | ECMFWLCLIP  |
| Mounting Clip                 | MMCLIP      |
| Wall Mounting Rail (60")      | MMZR60      |
| Mounting Rail                 | MMRAIL      |

## Rephasing Instructions

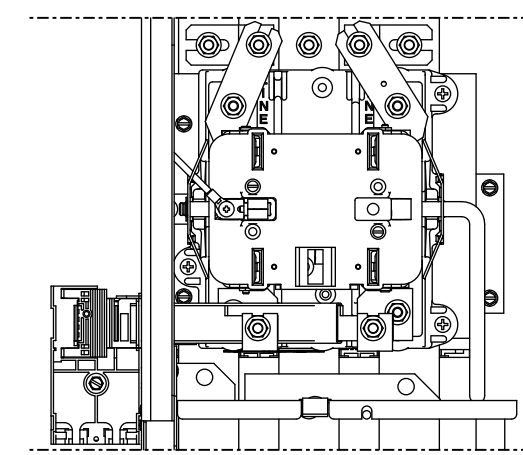
Factory installed phasing is AB, BC, AC, AB, BC, and AC top to bottom. Each meter socket can be phased AB, BC, or AC by repositioning line bus straps. If a different phase arrangement is needed, loosen hex nuts and reconnect one or both line bus straps, then retighten the hex nuts to 60-65 lb.-in. Tighten hex nut at meter socket first, then tighten hex nut on vertical phase bus.



## Schematic



## Enlarged Socket Detail



© 2014 Copyright Siemens Industry, Inc.

**SIEMENS**  
Siemens Industry, Inc.

### PowerMod Meter Stack

Description: **6 Position, Lever Bypass, Fusible**

KAM 9/11/14 DO NOT SCALE DRAWING Dwg. No. **WMLZF62125RJ**