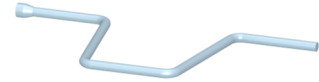


SIEMENS

Crank handle



3WJ9111-0BC01

Operating Instructions

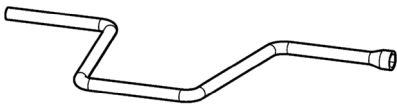
	DANGER Hazardous voltage. Will cause death or serious injury. Turn off and lock out all power supplying this device before working on this device. Replace all covers before power supplying this device is turned on.
	NOTICE Installation and maintenance must be carried out by qualified personnel.
	Information

3WJ: Manual

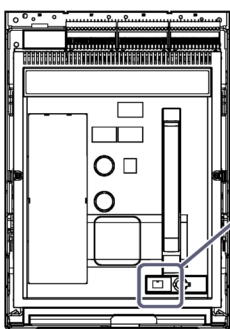


<https://sie.ag/3pi6i0D>

	Contents	
--	-----------------	--



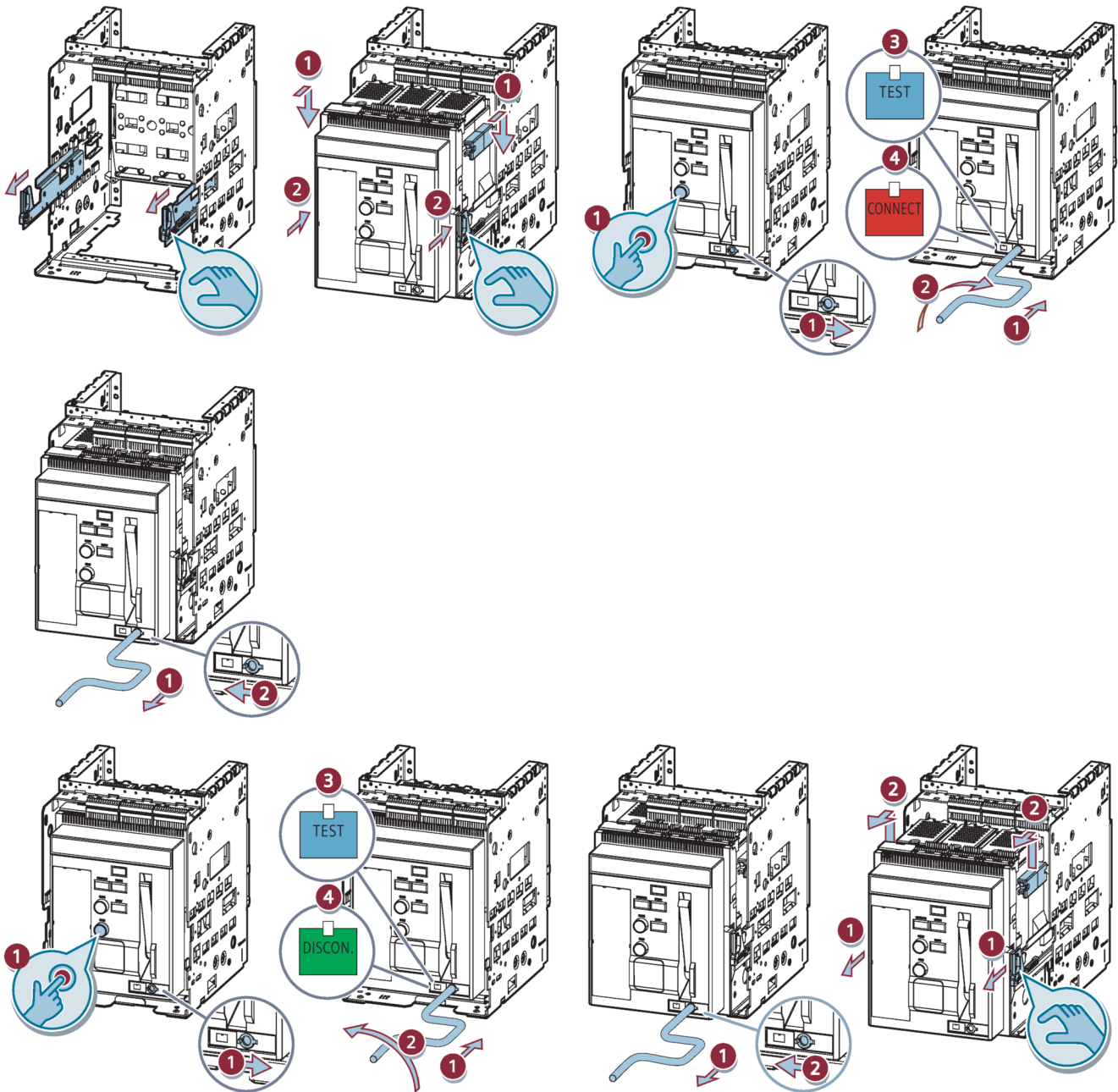
	Assembly	
--	-----------------	--



Position indicator



Indicator label	DISCON.	TEST	CONNECT
Color	Green	Blue	Red
Position status	Disconnection	Test	Connection



NOTICE

These instructions do not purport to cover all details or variations in equipment, or to provide for every possible contingency in connection with installation, operation, or maintenance. Should additional information be desired, please contact the local Siemens sales office. The contents of this instruction manual shall not become part of or modify any prior or existing agreement, commitment, or relationship. The sales contract contains the entire obligation of Siemens. The warranty contained in the contract between the parties is the sole warranty of Siemens. Any statements contained herein do not create new warranties or modify the existing warranty. Trademarks - Unless otherwise noted, all names identified by ® are registered trademarks of Siemens AG or Siemens Industry, Inc. The remaining trademarks in this publication may be trademarks whose use by third parties for their own purposes could violate the rights of the owner.