

1321-M150 Common Mode Choke

Where this Option is Used

The 1321-M150 common mode choke option can be installed with adjustable frequency AC drives. When installed at the drive output, the common mode choke helps to guard against interference with other electrical equipment (programmable controllers, sensors, analog circuits, and others). In addition, reducing the PWM carrier frequency reduces the effects and lowers the risk of common mode noise interference.

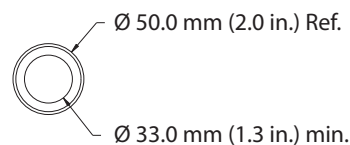
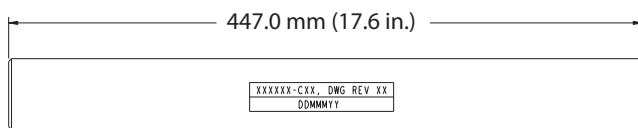


ATTENTION: Only qualified personnel familiar with adjustable frequency AC drives and associated machinery can plan or implement the installation, startup, and subsequent maintenance of the system. Failure to comply can result in personal injury and/or equipment damage.

What this Kit Includes

This kit includes these components:

- One common mode choke (1321-M150)
- Three mounting brackets
- Three tie wraps



Before You Install

Mount the choke assembly as close to the bottom of the drive as possible. Leave the appropriate amount of space between the choke assembly and drive to provide clearance for cables and leads installed at the drive. It is recommended that the choke is tie wrapped to a solid object, such as cabinet sheet metal or brackets when wiring is completed.

Install the Common Mode Choke

Follow these steps to install the common mode choke.

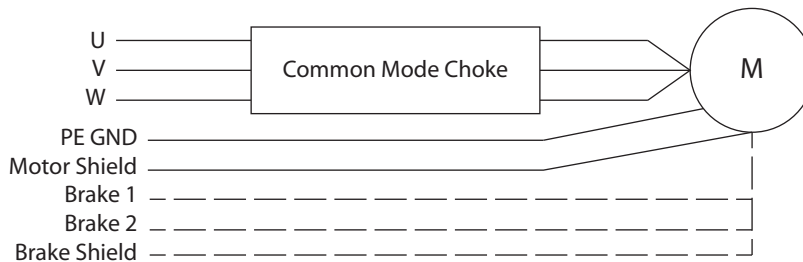
1. Remove all power from the system.



ATTENTION: Electric shock can cause injury or death. Remove all power before working with this product. Verify that the voltage on the drive bus capacitors has discharged. The voltage must be zero.

2. If used, secure the mounting brackets (provided in the kit) to a panel using customer-supplied screws.
3. Remove the motor leads from the drive terminals U, V, and W.
4. Feed the motor leads through the common mode choke.

IMPORTANT Only route the three motor leads through the choke. Do not route the motor shield, PE ground, and the brake leads (if present) through the choke.



5. Secure the choke to the mounting brackets or cabinet sheet metal surface by using tie wraps.

IMPORTANT The choke can slip out of the tie wraps when installed in a vertical position when the mounting brackets are not used. If a vertical orientation is required, use extra tie wraps to secure the choke assembly.



6. Reconnect the motor leads.

U.S. Allen-Bradley Drives Technical Support - Tel: (1) 262.512.8176, Fax: (1) 262.512.2222, E-mail: support@drives.ra.rockwell.com
Online: www.ab.com/support/abdrives.

Rockwell Automation maintains current product environmental information on its website at <http://www.rockwellautomation.com/rockwellautomation/about-us/sustainability-ethics/product-environmental-compliance.page>.

Allen-Bradley, Rockwell Software, and Rockwell Automation are trademarks of Rockwell Automation, Inc.
Trademarks not belonging to Rockwell Automation are property of their respective companies.

Rockwell Otomasyon Ticaret A.Ş., Kar Plaza İş Merkezi E Blok Kat:6 34752 İçerenköy, İstanbul, Tel: +90 (216) 5698400

www.rockwellautomation.com

Power, Control and Information Solutions Headquarters

Americas: Rockwell Automation, 1201 South Second Street, Milwaukee, WI 53204-2496 USA, Tel: (1) 414.382.2000, Fax: (1) 414.382.4444
Europe/Middle East/Africa: Rockwell Automation NV, Pegasus Park, De Kleetlaan 12a, 1831 Diegem, Belgium, Tel: (32) 2 663 0600, Fax: (32) 2 663 0640
Asia Pacific: Rockwell Automation, Level 14, Core F, Cyberport 3, 100 Cyberport Road, Hong Kong, Tel: (852) 2887 4788, Fax: (852) 2508 1846