

# General Purpose Enclosure Specifications

Catalog Numbers 598-BS, 598-DS, 598-PM, 598-PP

## Bulletin 598 – General Purpose Enclosures

These enclosures can be used as an automation control box, electrical control housing, and terminal wiring box in industrial and commercial applications.

- Type 3R, 4, 4X, 12, and 13 rainproof, watertight, corrosion resistant, and dust-tight, IP66 protection
- Available with optional plastic or metal mounting plates
- Provision for mounting with either AB or DIN Rail
- Enclosure can accommodate both panel mount and rail mount terminal blocks
- Designed for use in indoor and outdoor applications

### General Purpose Enclosures Specifications

Attribute		Description
Certifications/ approvals	Approvals/certifications	c-UL-us, CE
	Degree of protection	Type 3R, 4, 4X, 12, and 13, IP66
Environment	Storage temperature range	-40...+75 °C (-40...+158 °F)
	Operating temperature range	-40...+55 °C (-40...+131 °F)
Material	Enclosure with solid base and solid cover	Thermoplastic polyester blend, UL94-5VA
	Enclosure with solid base and clear cover	Polycarbonate, UL94-5VA
	Gasket	Foam-in-place polyurethane
	Plastic mounting plate	ABS
	Metal mounting plate	Steel plus zinc with chromate plating
	Mounting plate hardware	Stainless steel
	External mounting bracket	Stainless steel
	Hinges and latches	Stainless steel



**General Purpose Enclosures Specifications**



**NOTE:** Preferred availability cat. nos. are in bold type.

Enclosure	Attribute			
	Catalog number	<b>598-BS533</b>	<b>598-BS733</b>	<b>598-BS933</b>
Package quantity	1			
Outside dimensions—H x W x D <sup>(2)</sup>	130 x 80 x 85 mm (5.12 x 3.15 x 3.35 in.)	180 x 80 x 85 mm (7.09 x 3.15 x 3.35 in.)	250 x 80 x 85 mm (9.84 x 3.15 x 3.35 in.)	
Base depth	50 mm (1.97 in.)			
Cover depth	35 mm (1.38 in.)			
Cover screw material	Glass-reinforced nylon			
Cover plug material	—			
Recommended tightening torque	1.0...1.2 N•m (9...11 lb-in)			
Shipping weight, approx	271 g (0.6 lb)	357 g (0.79 lb)	435 g (0.96 lb)	



Plastic mounting plate <sup>(1)</sup>	Attribute			
	Catalog number	<b>598-PP53</b>	<b>598-PP73</b>	<b>598-PP93</b>
Package quantity	1			
Outside dimensions—H x W x D <sup>(2)</sup>	116 x 68 x 3.5 mm (4.57 x 2.68 x 0.14 in.)	165.5 x 68 x 3.5 mm (6.52 x 2.68 x 0.14 in.)	235 x 68 x 3.5 mm (9.25 x 2.68 x 0.14 in.)	
Recommended install hardware	M4 (#8)			
Shipping weight, approx	22.4 g (0.05 lb)	32.0 g (0.07 lb)	45.9 g (0.1 lb)	



Metal mounting plate <sup>(1)</sup>	Attribute			
	Catalog number	<b>598-PM53</b>	<b>598-PM73</b>	<b>598-PM93</b>
Package quantity	1			
Outside dimensions—H x W x D <sup>(2)</sup>	116 x 68 x 1.6 mm (4.57 x 2.68 x 0.06 in.)	165.5 x 68 x 1.6 mm (6.52 x 2.68 x 0.06 in.)	235 x 68 x 1.6 mm (9.25 x 2.68 x 0.06 in.)	
Shipping weight, approx	85.8 g (0.19 lb)	124.8 g (0.28 lb)	181 g (0.4 lb)	

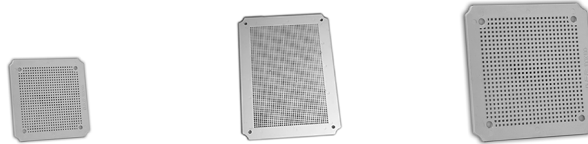
(1) In applications where there are shock and vibration, a metal mounting plate is recommended.  
 (2) Dimensions are not intended to be used for manufacturing purposes.

**General Purpose Enclosures Specifications** (continued)



**NOTE:** Preferred availability cat. nos. are in bold type.

Enclosure	Attribute	Shown above: 598-BS885	Shown above: 598-BS1187	Shown above: 598-BS11115
Enclosure	Catalog number	<b>598-BS885</b> 598-BS885C	<b>598-BS1187</b> <b>598-BS1187C</b>	<b>598-BS11115</b> <b>598-BS11115C</b>
	<ul style="list-style-type: none"> <li>• Lift-off solid cover</li> <li>• Lift-off clear cover<sup>(4)</sup></li> <li>• Hinged solid cover</li> <li>• Hinged clear cover<sup>(4)</sup></li> </ul>	<b>598-DS885M</b> 598-DS885CM	<b>598-DS1187M</b> 598-DS1187CM	598-DS11115M 598-DS11115CM
	Package quantity	1		
	Outside dimensions—H x W x D <sup>(5)</sup>	190 x 190 x 130 mm (7.48 x 7.48 x 5.12 in.)	280 x 190 x 180 mm (11.02 x 7.48 x 7.09 in.)	280 x 280 x 130 mm (11.02 x 11.02 x 5.12 in.)
	Base depth	98 mm (3.86 in.)		
	Cover depth	30 mm (1.18 in.)		
	Cover screw material	Glass-reinforced nylon		
	Cover plug material	Polypropylene		
	Recommended tightening torque	1.2...1.7 N·m (11...15 lb-in)		
Shipping weight, approx	801.6 g (1.77 lb)	1261 g (2.78 lb)	1308 g (2.88 lb)	



Plastic mounting plate <sup>(1)</sup>	Catalog number	<b>598-PP88</b>	<b>598-PP118</b>	<b>598-PP1111</b>
Plastic mounting plate <sup>(1)</sup>	Package quantity	1		
	Outside dimensions—H x W x D <sup>(5)</sup>	160 x 160 x 4 mm (6.3 x 6.3 x 0.16 in.)	252 x 161 x 3.4 mm (9.92 x 6.34 x 0.13 in.)	267 x 267 x 3.4 mm (10.51 x 10.51 x 0.13 in.)
	Thickness at support bracket	12mm (0.47 in.)		
	Recommended install hardware	M4 (#8)		M5 (#10)
	Shipping weight, approx	98.5 g (0.22 lb)	124.4 g (0.27 lb)	206.4 g (0.46 lb)



Metal mounting plate <sup>(1)</sup>	Catalog number	<b>598-PM88</b>	<b>598-PM118</b>	<b>598-PM1111</b>
Metal mounting plate <sup>(1)</sup>	Package quantity	1		
	Outside dimensions—H x W x D <sup>(5)</sup>	161 x 161 x 1.6 mm (6.34 x 6.34 x 0.06 in.)	251.5 x 161 x 1.6 mm (9.9 x 6.34 x 0.06 in.)	251 x 251 x 1.6 mm (9.88 x 9.88 x 0.06 in.)
	Shipping weight, approx	319.3 g (0.7 lb)	500.9 g (1.1 lb)	748.5 g (1.65 lb)

Stainless steel external mounting bracket kit <sup>(2)</sup>	Catalog number	<b>598-N13</b>		
	Package quantity	1		
	Shipping weight, approx	92.5 g (0.2 lb)		
Stainless steel hinge and latch kit <sup>(3)</sup>	Catalog number	<b>598-NHL22M</b>		
	Package quantity	1		
	Shipping weight, approx	165 g (0.36 lb)		

(1) In applications where there are shock and vibration, a metal mounting plate is recommended.

(2) Includes four brackets and four mounting hardware sets per kit.

(3) Kit is to convert cover from lift-off to hinged.

(4) Clear cover material is polycarbonate.

(5) Dimensions are not intended to be used for manufacturing purposes.

**General Purpose Enclosures Specifications** (continued)



**NOTE:** Preferred availability cat. nos. are in bold type.

Enclosure	Attribute	Shown above: 598-BS13115	Shown above: 598-BS1587	Shown above: 598-BS15117
	Catalog number			
<ul style="list-style-type: none"> <li>• Lift-off solid cover</li> <li>• Lift-off clear cover<sup>(4)</sup></li> <li>• Hinged solid cover</li> <li>• Hinged clear cover<sup>(4)</sup></li> </ul>		598-BS13115	598-BS1587	<b>598-BS15117</b>
		598-BS13115C	598-BS1587C	<b>598-BS15117C</b>
		598-DS13115M	598-DS1587M	598-DS15117M
		598-DS13115CM	598-DS1587CM	598-DS15117CM
Package quantity		1		
Outside dimensions—H x W x D <sup>(5)</sup>		341 x 280 x 130 mm (13.43 x 11.02 x 5.12 in.)	382 x 192 x 180 mm (15.04 x 7.56 x 7.09 in.)	380 x 280 x 180 mm (14.96 x 11.02 x 7.09 in.)
Base depth		100 mm (3.94 in.)	98 mm (3.86 in.)	
Cover depth		30 mm (1.18 in.)	80 mm (3.15 in.)	
Cover screw material		Glass-reinforced nylon		
Cover plug material		Polypropylene		
Recommended tightening torque		1.2... 1.7 N·m (11... 15 lb-in)		
Shipping weight, approx		1643 g (3.62 lb)	1685 g (3.71 lb)	2069 g (4.56 lb)



Plastic mounting plate <sup>(1)</sup>	Catalog number	<b>598-PP1311</b>	<b>598-PP158</b>	<b>598-PP1511</b>
	Package quantity		1	
Outside dimensions—H x W x D <sup>(5)</sup>		300 x 240 x 4 mm (11.81 x 9.45 x 0.16 in.)	335 x 155 x 4 mm (13.19 x 6.1 x 0.16 in.)	351 x 251 x 4.3 mm (13.82 x 9.88 x 0.17 in.)
Thickness at support bracket		12 mm (0.47 in.)		
Recommended install hardware		M4 (#8)		
Shipping weight, approx		268.8 g (0.59 lb)	194.2 g (0.43 lb)	333.1 g (0.73 lb)



Metal mounting plate <sup>(1)</sup>	Catalog number	598-PM1311	598-PM158	<b>598-PM1511</b>
	Package quantity		1	
Outside dimensions—H x W x D <sup>(5)</sup>		312 x 251 x 1.6 mm (12.28 x 9.88 x 0.06 in.)	352.5 x 161 x 1.6 mm (13.88 x 6.34 x 0.06 in.)	351 x 251 x 1.6 mm (13.82 x 9.88 x 0.06 in.)
Shipping weight, approx		955.5 g (2.11 lb)	710.1 g (1.57 lb)	1089.8 g (2.4 lb)

Stainless steel external mounting bracket kit <sup>(2)</sup>	Catalog number	<b>598-N13</b>		
	Package quantity		1	
Shipping weight, approx		92.5 g (0.2 lb)		

Stainless steel hinge and latch kit <sup>(3)</sup>	Catalog number	<b>598-NHL22M</b>		
	Package quantity		1	
Shipping weight, approx		165 g (0.36 lb)		

- (1) In applications where there are shock and vibration, a metal mounting plate is recommended.
- (2) Includes four brackets and four mounting hardware sets per kit.
- (3) Kit is to convert cover from lift-off to hinged.
- (4) Clear cover material is polycarbonate.
- (5) Dimensions are not intended to be used for manufacturing purposes.

**General Purpose Enclosures Specifications (continued)**



**NOTE:** Preferred availability cat. nos. are in bold type.

Enclosure	Attribute	Shown above: 598-BS22115	Shown above: 598-BS22157
	Catalog number		
<ul style="list-style-type: none"> <li>• Lift-off solid cover</li> <li>• Lift-off clear cover<sup>(3)</sup></li> <li>• Hinged solid cover</li> <li>• Hinged clear cover<sup>(3)</sup></li> </ul>		598-BS22115	598-BS22157
		598-BS22115C	598-BS22157C
		598-DS22115M	598-DS22157M
		598-DS22115CM	598-DS22157CM
Outside dimensions (H x W x D) <sup>(4)</sup>		560 x 280 x 130 mm (22.05 x 11.02 x 5.12 in.)	560 x 380 x 180 mm (22.05 x 14.96 x 7.09 in.)
Base depth		98 mm (3.86 in.)	148 mm (5.83 in.)
Cover depth		30 mm (1.18 in.)	
Cover screw material		Glass-reinforced nylon	
Cover plug material		Polypropylene	
Recommended tightening torque		1.2...1.7 N•m (11...15 lb•in)	
Shipping weight, approx		2622 g (5.78 lb)	4327 g (9.54 lb)



Plastic mounting plate	Catalog number	—	598-PP1511 <sup>(5)</sup>
	Packaging quantity		1
	Outside dimensions—H x W x D <sup>(4)</sup>		351 x 251x 4.3 mm (13.82 x 9.88 x 0.17 in.)
	Thickness at support bracket		12 mm (0.47 in.)
	Recommended install hardware		M4 (#8)
	Shipping weight, approx		333.1 g (0.73 lb)



Metal mounting plate	Catalog number	598-PM2211	598-PM2215
	Package quantity	1	
	Outside dimensions—H x W x D <sup>(4)</sup>	532 x 254.5 x 1.6 mm (20.94 x 10.02 x 0.06 in.)	532 x 354.5 x 1.6 mm (20.94 x 13.6 x 0.06 in.)
	Shipping weight, approx	1712 g (3.77 lb)	2332 g (5.14 lb)

Stainless steel external mounting bracket kit <sup>(1)</sup>	Catalog number	<b>598-N13</b>	
	Package quantity	1	
	Shipping weight, approx	92.5 g (0.2 lb)	

Stainless steel hinge and latch kit <sup>(2)</sup>	Catalog number	<b>598-NHL22M</b>	
	Package quantity	1	
	Shipping weight, approx	165 g (0.36 lb)	

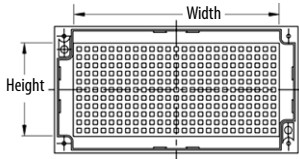
- (1) Includes four brackets and four mounting hardware sets per kit.
- (2) Kit is to convert cover from lift-off to hinged; two kits must be ordered.
- (3) Clear cover material is polycarbonate.
- (4) Dimensions are not intended to be used for manufacturing purposes.
- (5) Order two plastic mounting plates for these enclosures.

**Junction Boxes Specifications**



**NOTE:** Preferred availability cat. nos. are in bold type.

Enclosure	Attribute		
	Catalog number	598-BS332	<b>598-BS632</b>
Package quantity	1		
Outside dimensions—H x W x D <sup>(2)</sup>	90 x 70 x 51.5 mm (3.54 x 2.76 x 2.03 in.)	165 x 85 x 51.5 mm (6.5 x 3.35 x 2.03 in.)	130 x 80 x 85 mm (5.12 x 3.15 x 3.35 in.)
Base depth	45 mm (1.77 in.)		50 mm (1.97 in.)
Cover depth	6.5 mm (0.26 in.)		35 mm (1.38 in.)
Cover screw material	Stainless steel		Glass-reinforced nylon
Recommended tightening torque	0.8...1.0 N·m (7...9 lb·in)		1.0...1.2 N·m (9...11 lb·in)
Shipping weight, approx	103 g (0.23 lb)	189 g (0.42 lb)	271 g (0.60 lb)



Plastic mounting plate <sup>(1)</sup>	Catalog number	Molded-in		<b>598-PP53</b>
	Package quantity	—		1
	Outside dimensions—H x W x D <sup>(2)</sup>	64.5 x 51.5 x 4.9 mm (2.54 x 2.03 x 0.19 in.)	139.5 x 62.5 x 4.9 mm (5.49 x 2.46 x 0.19 in.)	116 x 68 x 3.5 mm (4.57 x 2.68 x 0.14 in.)
	Recommended install hardware	M4 (#8)		
	Shipping weight, approx	—		22.41 g (0.05 lb)



Metal mounting plate <sup>(1)</sup>	Catalog number	—	<b>598-PM53</b>
	Package quantity		1
	Outside dimensions—H x W x D <sup>(2)</sup>		116 x 68 x 1.6 mm (4.57 x 2.68 x 0.06 in.)
	Shipping weight, approx		85.8 g (0.19 lb)

(1) In applications where there are shock and vibration, a metal mounting plate is recommended.

(2) Dimensions are not intended to be used for manufacturing purposes.

**Junction Boxes Specifications** (continued)



**NOTE:** Preferred availability cat. nos. are in bold type.

Enclosure	Attribute		
	Catalog number	598-BS733	<b>598-BS933</b>
Package quantity	1		
Outside dimensions—H x W x D <sup>(2)</sup>	180 x 80 x 85 mm (7.09 x 3.15 x 3.35 in.)	250 x 80 x 85 mm (9.84 x 3.15 x 3.35 in.)	190 x 190 x 130 mm (7.48 x 7.48 x 5.12 in.)
Base depth	50 mm (1.97 in.)		98 mm (3.86 in.)
Cover depth	35 mm (1.38 in.)		30 mm (1.18 in.)
Cover screw material	Glass-reinforced nylon		
Recommended tightening torque	1.0...1.2 N·m (9...11 lb·in)		1.2...1.7 N·m (11...15 lb·in)
Shipping weight, approx	357 g (0.79 lb)	435 g (0.96 lb)	801.6 g (1.77 lb)



Plastic mounting plate <sup>(1)</sup>	Attribute			
	Catalog number	598-PP73	598-PP93	<b>598-PP88</b>
	Package quantity	1		
	Outside dimensions—H x W x D <sup>(2)</sup>	165.5 x 68 x 3.5 mm (6.52 x 2.68 x 0.14 in.)	235 x 68 x 3.5 mm (9.25 x 2.68 x 0.14 in.)	160 x 160 x 4 mm (6.3 x 6.3 x 0.16 in.)
	Recommended install hardware	M4 (#8)		
Shipping weight, approx	32 g (0.07 lb)	45.9 g (0.1 lb)	98.5 g (0.22 lb)	



Metal mounting plate <sup>(1)</sup>	Attribute			
	Catalog number	598-PM73	598-PM93	<b>598-PM88</b>
	Package quantity	1		
	Outside dimensions—H x W x D <sup>(2)</sup>	165.5 x 68 x 1.6 mm (6.52 x 2.68 x 0.06 in.)	235 x 68 x 1.6 mm (9.25 x 2.68 x 0.06 in.)	161 x 161 x 1.6 mm (6.34 x 6.34 x 0.06 in.)
Shipping weight, approx	124.8 g (0.28 lb)	181 g (0.4 lb)	319.3 g (0.7 lb)	

(1) In applications where there are shock and vibration, a metal mounting plate is recommended.

(2) Dimensions are not intended to be used for manufacturing purposes.

(3) For clear and hinged covers, see cat. no. 598-BS885 information on [page 3](#).

**Terminal Block Compatibility**

<b>Junction Box</b>  NOTE: Preferred availability cat. nos. are in bold type.							
	Catalog number	598-BS332	<b>598-BS632</b>	<b>598-BS533</b>	<b>598-BS733</b>	<b>598-BS933</b>	<b>598-BS885</b>
<b>Mounting Options for Use with Panel Mount Terminal Blocks</b>							
	Catalog number	Molded-in		<b>598-PP53</b>	598-PP73	598-PP93	<b>598-PP88</b>
<b>Types of Terminal Blocks Suitable for Mounting on Plastic Grid in Junction Box</b>		<b>Maximum Number of Poles, Approx</b>					
<b>Panel Mount Blocks with Predefined Set of Poles</b>	Barrier Strips <sup>(2)</sup> 	2	8	4	8	12	
	1492-EC85 & 1492-ED103 	—		5			
	1492-HC6 	—		6			
	1492-HJ86 & 1492-HJ812 	—	12	6	12		
<b>Panel Mount Interlocking Blocks</b>	1492-15T 	2	6	4	7	12	7
	1492-25T 	—	5	3	5	8	6
<b>Rail Mount Terminal Blocks<sup>(1)</sup></b>	1492-C...	—		7	12	18	14
	1492-F...						
	1492-H...						
	1492-J...			14	24	36	28
	1492-L...						
1492-W...							

(1) Requires AB or DIN rail for mounting.  
 (2) For barrier strip with typical 0.563 in. pitch spacings.



**Notes:**

# Rockwell Automation Support

Use the following resources to access support information.

<b>Technical Support Center</b>	Knowledgebase Articles, How-to Videos, FAQs, Chat, User Forums, and Product Notification Updates.	<a href="http://www.rockwellautomation.com/knowledgebase">www.rockwellautomation.com/knowledgebase</a>
<b>Local Technical Support Phone Numbers</b>	Locate the phone number for your country.	<a href="http://www.rockwellautomation.com/global/support/get-support-now.page">www.rockwellautomation.com/global/support/get-support-now.page</a>
<b>Direct Dial Codes</b>	Find the Direct Dial Code for your product. Use the code to route your call directly to a technical support engineer.	<a href="http://www.rockwellautomation.com/global/support/direct-dial.page">www.rockwellautomation.com/global/support/direct-dial.page</a>
<b>Literature Library</b>	Installation Instructions, Manuals, Brochures, and Technical Data.	<a href="http://www.rockwellautomation.com/literature">www.rockwellautomation.com/literature</a>
<b>Product Compatibility and Download Center (PCDC)</b>	Get help determining how products interact, check features and capabilities, and find associated firmware.	<a href="http://www.rockwellautomation.com/global/support/pcdc.page">www.rockwellautomation.com/global/support/pcdc.page</a>

## Documentation Feedback

Your comments will help us serve your documentation needs better. If you have any suggestions on how to improve this document, complete the How Are We Doing? form at [http://literature.rockwellautomation.com/idc/groups/literature/documents/du/ra-du002\\_-en-e.pdf](http://literature.rockwellautomation.com/idc/groups/literature/documents/du/ra-du002_-en-e.pdf).

## Rockwell Automation Support

For technical support, visit <http://www.rockwellautomation.com/support/overview.page>.

Rockwell Automation maintains current product environmental information on its website at <http://www.rockwellautomation.com/rockwellautomation/about-us/sustainability-ethics/product-environmental-compliance.page>.

Allen-Bradley, LISTEN. THINK. SOLVE., Rockwell Automation, and Rockwell Software are trademarks of Rockwell Automation, Inc. Trademarks not belonging to Rockwell Automation are property of their respective companies.

Rockwell Otomasyon Ticaret A.Ş., Kar Plaza İş Merkezi E Blok Kat:6 34752 İçerenköy, İstanbul, Tel: +90 (216) 5698400

**[www.rockwellautomation.com](http://www.rockwellautomation.com)**

### Power, Control and Information Solutions Headquarters

Americas: Rockwell Automation, 1201 South Second Street, Milwaukee, WI 53204-2496 USA, Tel: (1) 414.382.2000, Fax: (1) 414.382.4444  
Europe/Middle East/Africa: Rockwell Automation NV, Pegasus Park, De Kleetlaan 12a, 1831 Diegem, Belgium, Tel: (32) 2 663 0600, Fax: (32) 2 663 0640  
Asia Pacific: Rockwell Automation, Level 14, Core F, Cyberport 3, 100 Cyberport Road, Hong Kong, Tel: (852) 2887 4788, Fax: (852) 2508 1846

Publication 598-TD001B-EN-P - August 2019

Supersedes Publication 598-TD001A-EN-P - September 2014

Copyright © 2019 Rockwell Automation, Inc. All rights reserved. Printed in the U.S.A.